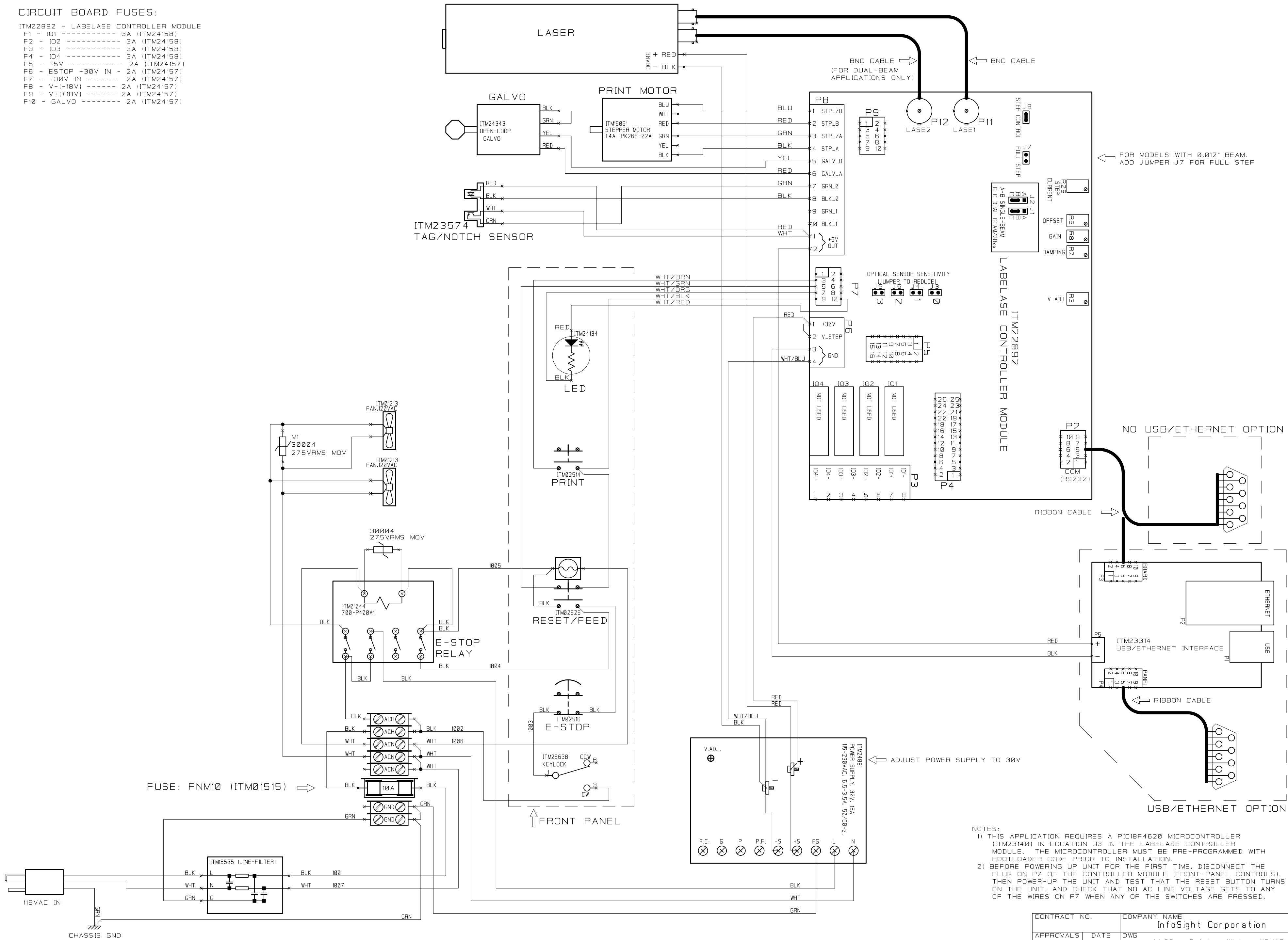


CIRCUIT BOARD FUSES:

ITM22892 - LABELASE CONTROLLER MODULE
F1 - IO1 ----- 3A (ITM24158)
F2 - IO2 ----- 3A (ITM24158)
F3 - IO3 ----- 3A (ITM24158)
F4 - IO4 ----- 3A (ITM24158)
F5 - +5V ----- 2A (ITM24157)
F6 - ESTOP +30V IN - 2A (ITM24157)
F7 - +30V IN ----- 2A (ITM24157)
F8 - V-(-18V) ----- 2A (ITM24157)
F9 - V-(+18V) ----- 2A (ITM24157)
F10 - GALV ----- 2A (ITM24157)



- NOTES:
- 1) THIS APPLICATION REQUIRES A PIC18F4620 MICROCONTROLLER (ITM23140) IN LOCATION U3 IN THE LABELASE CONTROLLER MODULE. THE MICROCONTROLLER MUST BE PRE-PROGRAMMED WITH BOOTLOADER CODE PRIOR TO INSTALLATION.
 - 2) BEFORE POWERING UP UNIT FOR THE FIRST TIME, DISCONNECT THE PLUG ON P7 OF THE CONTROLLER MODULE (FRONT-PANEL CONTROLS). THEN POWER-UP THE UNIT AND TEST THAT THE RESET BUTTON TURNS ON THE UNIT, AND CHECK THAT NO AC LINE VOLTAGE GETS TO ANY OF THE WIRES ON P7 WHEN ANY OF THE SWITCHES ARE PRESSED.

CONTRACT NO.		COMPANY NAME	
APPROVALS		InfoSight Corporation	
DATE		LL28xx Printer Wiring, 110VAC	
DRAWN DT		1-8-12	
CHECKED		C	
ISSUED		SCALE	
		SHEET 1 of 1	